



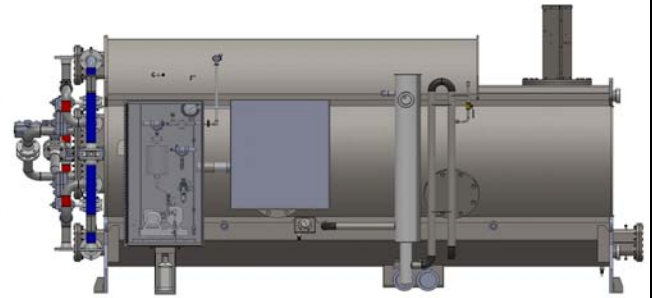
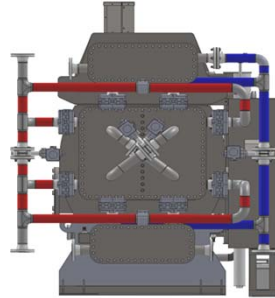
**SUBMITTAL DATA: AD3-C**

**C FRAME ADSORPTION CHILLER**

Job Name:	Location:	Date:
Purchaser:	Engineer:	
Submitted to:	Approval:	Date:
Submitted by:	Schedule No.:	

**GENERAL FEATURES:**

- ▶ Ultra low electricity consumption
- ▶ Zero ozone depletion potential
- ▶ No dangerous chemicals
- ▶ Very few moving parts
- ▶ Ease of maintenance
- ▶ Advanced microprocessor control
- ▶ Designed for outdoor installation
- ▶ Wide temperature ranges allowed



MODEL	C-40	C-30	C-20	C-10
Rated Capacity (Tons)	41	30	20	10

**Chilled Water:**

Inlet Temperature (°F)	55	55	55	55
Outlet Temperature (°F)	45	45	45	45
Flow Rate (gpm)	98	72	48	24
Pressure Drop (ft. H <sub>2</sub> O)	28	19	11	4
Connection Size:	2.5"	2.5"	2.5"	2.5"

**Condenser Water:**

Inlet Temperature (°F)	85	85	85	85
Outlet Temperature (°F)	95	95	95	95
Flow Rate (gpm)	296	217	145	72
Pressure Drop (ft. H <sub>2</sub> O)	39	26	15	6
Connection Size:	4"	3"	2.5"	2.5"

**Hot Water:**

Inlet Temperature (°F)	195	195	195	195
Outlet Temperature (°F)	183	183	183	183
Flow Rate (gpm)	164	120	80	40
Pressure Drop (ft. H <sub>2</sub> O)	14	9	6	2
Connection Size:	3"	2.5"	2.5"	2.5"

\*Rated for maximum capacity mode. Higher efficiencies are available at reduced capacities.

\*All data is preliminary and subject to change without notice.

**Electrical**

Voltage:..... 208/230-3-60  
 Frequency:..... 60 Hz  
 Operating kW Consumption:..... 0.6 kW  
 Maximum kW Consumption..... 1.7 kW

**Air Supply**

Air Pressure:..... 71 psi  
 Air Consumption:..... 0.34 cfm

**Unit Dimensions\***

Width..... 80"  
 Length..... 190"  
 Height..... 94"  
 \*with cabinets mounted on the side as shown

**Weight**

Empty:..... 16,000 lbs  
 Operating:..... 18,000 lbs

Refrigerant type:..... Tap Water (H<sub>2</sub>O)

**Operating Range**

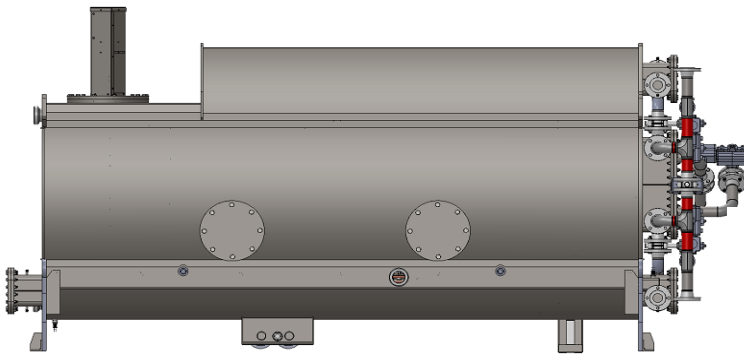
Chilled Water..... 38 °F to 68 °F  
 Hot Water..... 125 °F to 200 °F  
 Condenser Water..... 50 °F to 102 °F  
 Maximum Pressure..... 70 psig

\*Maximum pressure 70 psig for hot, chilled, & condenser water

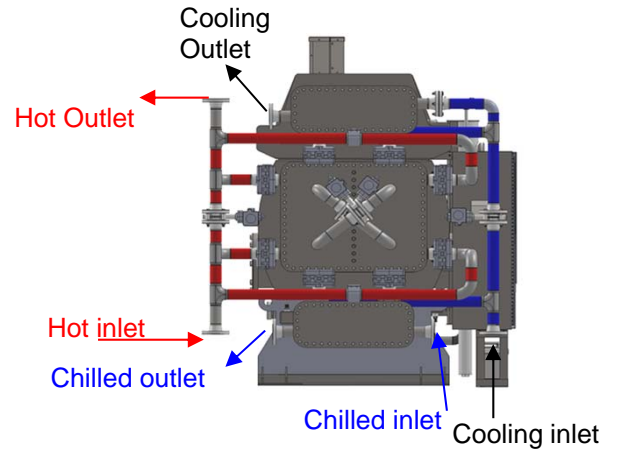
Notes:

## DIMENSIONS: AD3-C

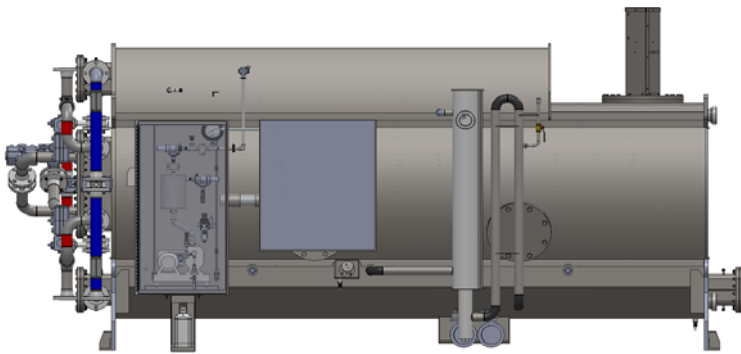
## C FRAME ADSORPTION CHILLER



LEFT SIDE



FRONT



RIGHT SIDE

See drawings for specific piping connections and sizes.

### Field Notes:

Chiller must be leveled upon installation with included leveling bolts.  
Three-way control valves are NOT required for field piping.  
Minimum 30" clearance required in front of the chiller.  
The piping configuration shall provide clear access to the chiller.  
Installation and water treatment per IOM required.

Specifications are subject to change without notice.