

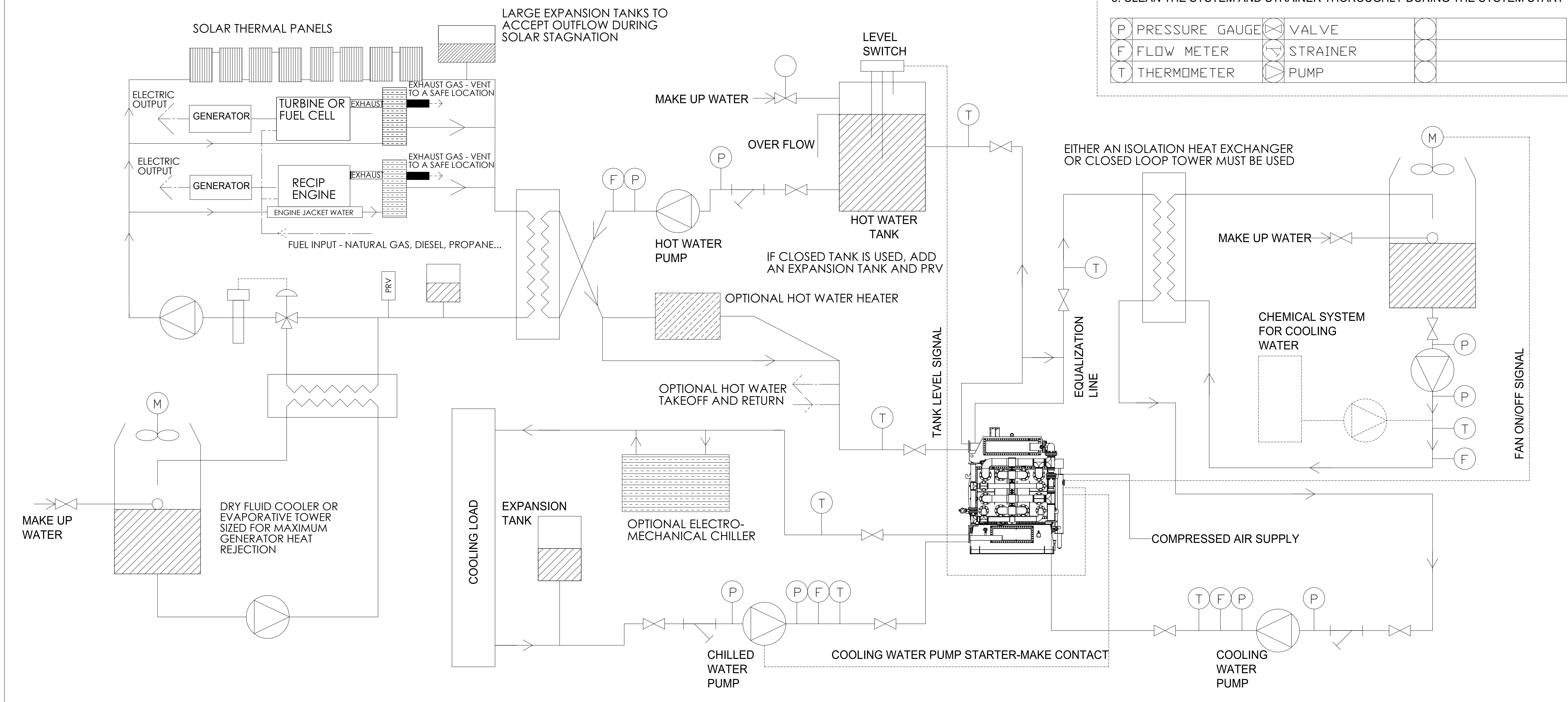
ECO-MAX HOT WATER FIRED COP=0.55 SOLID DESICCANT ADSORPTION CHILLER VERY LOW MAINTENANCE VERY WIDE OPERATING RANGE

FOR APPLICATIONS WITH LOW TEMP WASTE HOT WATER

ECO-MAX - HOT WATER FIRED CHILLER
FOR USE WITH A RECIP ENGINE,
TURBINE, SOLAR THERMAL, OR WASTE HEAT

NOTES:
1. THIS DIAGRAM IS FOR REFERENCE USE ONLY.
2. PROVIDE DRAIN AND AIR PIPING.
3. CLEAN THE SYSTEM AND STRAINER THOROUGHLY DURING THE SYSTEM START UP.

P	PRESSURE GAUGE	VALVE
F	FLOW METER	STRAINER
T	THERMOMETER	PUMP



THE ECO-MAX CHILLER OPERATES ON A CONTINUOUS BATCH PROCESS.
ALL WATER CIRCUIT TEMPERATURES FLUCTUATE THROUGHOUT THE CYCLE WHICH LASTS 4 TO 8 MINUTES